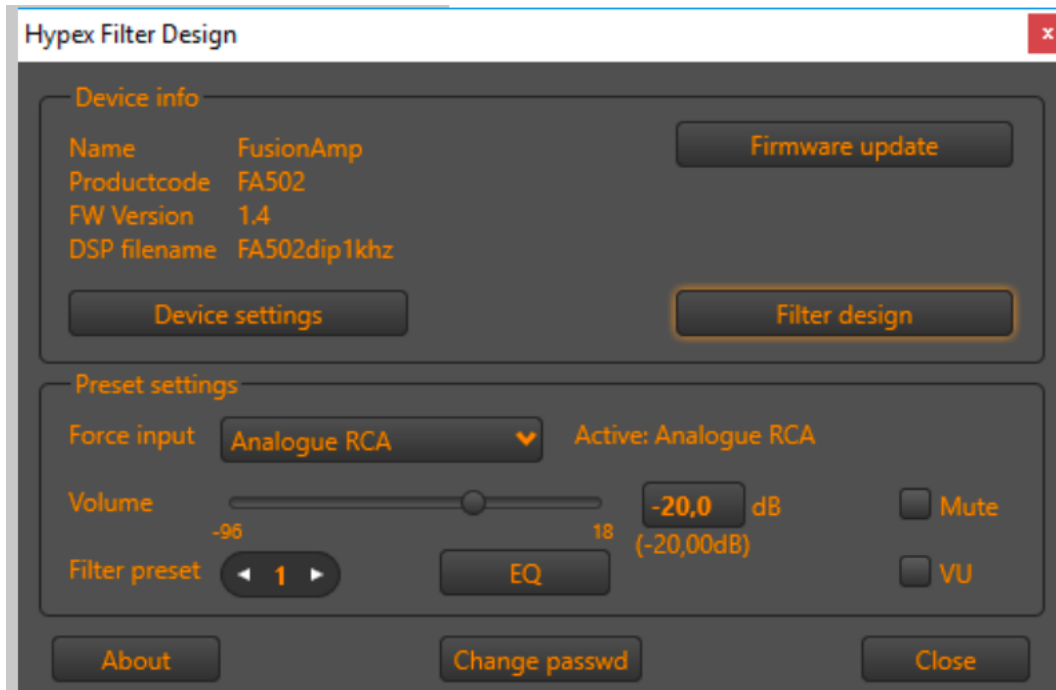


RTM10 Input Change Instructions

- 1) Download and install the Hypex HFD Software which can be found at the bottom of the following web page: www.mesanovicmicrophones.com/rtm10
- 2) You will need a Windows Operating System to install and run the software
- 3) Once the software is installed open the software. Once the software is opened the window should look something like the screen below. Note: The information about the speaker will not be displayed when first opening the software.



- 4) Connect a USB cable from your computer to the rear amplifier plate. The USB connection port on the rear amplifier plate is a USB Type-B Mini and labeled "USB For Manufacturer Use". The speaker can be on while connecting. If the speaker is off, turn it on after connecting. Make sure no input is connected.
- 5) Once the speaker is on and connected, the screen above will display the Name, Serial Number, etc.
- 6) To change the input from XLR to RCA Phono, click the drop down arrow for "Force Input" and selected RCA Phono. Do not select Auto-Detect. To enable RCA Phono for each bass shelf that is adjustable on the rear of the amplifier plate, select "Filter Preset" 2 and repeat the change from XLR to RCA Phono. Do the same for Preset 3. Once finished return the Preset to 1.
- 7) Disconnect the USB cable from the rear of the amplifier and repeat the instructions for the other speaker.
- 8) To return the input to XLR, follow the above instructions for both speakers.
- 9) NOTE: Do not change the Volume or try to adjust anything else. All other functions of the DSP control are password protected.